

Making Missions Work: the TRAMI project

EMIN Meeting

addressed to
Strategic Configuration and EU Mission Subgroups

23. June 2023
Online

Wolfgang Polt (Joanneum Research POLICIES)

Matthias Weber (AIT Austrian Institute of Technology, Center for Innovation Systems and Policy)



- **“If we can land a man on the moon, why can’t we solve the problems of the ghetto?”** (Nelson 1977) → different types of missions (Kuittinen/Polt/Weber 2018):
 - **‘accelerator’** (scientific, technological, economic)
 - **‘transformative’** (large-scale socio-technical systems)
- ...“initiatives [which] ... have clearly defined (societal or technological) goals with preferably **qualified and/or quantified targets and progress monitored along predefined milestones. Directionality and intentionality** of these initiatives is what differentiates them from other types of initiatives, such as systemic or challenge-oriented policies”

Implementing Missions ...

...a multitude of activities ...

- Several activities have been launched to accompany the implementation of EU Missions: Mission-specific CSAs, Mutual Learning Exercises, Expert Groups etc. ... and: **TRAMI as cross-cutting project focusing on mission governance**
- Duration: 04/2022 – 04/2024
- **26 partners from 17 MS and AS**, mostly public administrations and agencies tasked with the implementation of missions with the **ambition of creating sustainable structures and processes** to support the governance of mission implementation

Objectives

To support the **alignment and coordination** between national, regional and local initiatives



To build and consolidate a sustainable European Mission Core Network

To **exchange best practice** on how national, regional and local efforts and related funding can contribute to missions' objectives



To provide policy intelligence related to the missions

To **facilitate the engagement of regional and local actors** in support of EU-level and national activities;



To promote knowledge exchange, mutual learning and dissemination and engagement of stakeholders

To **map the relevant national, regional and local stakeholders** (incl. civil society organisations and institutions) and **funding streams**

To **prepare for potential hubs at national level**

To **develop the basis for a mission governance model**

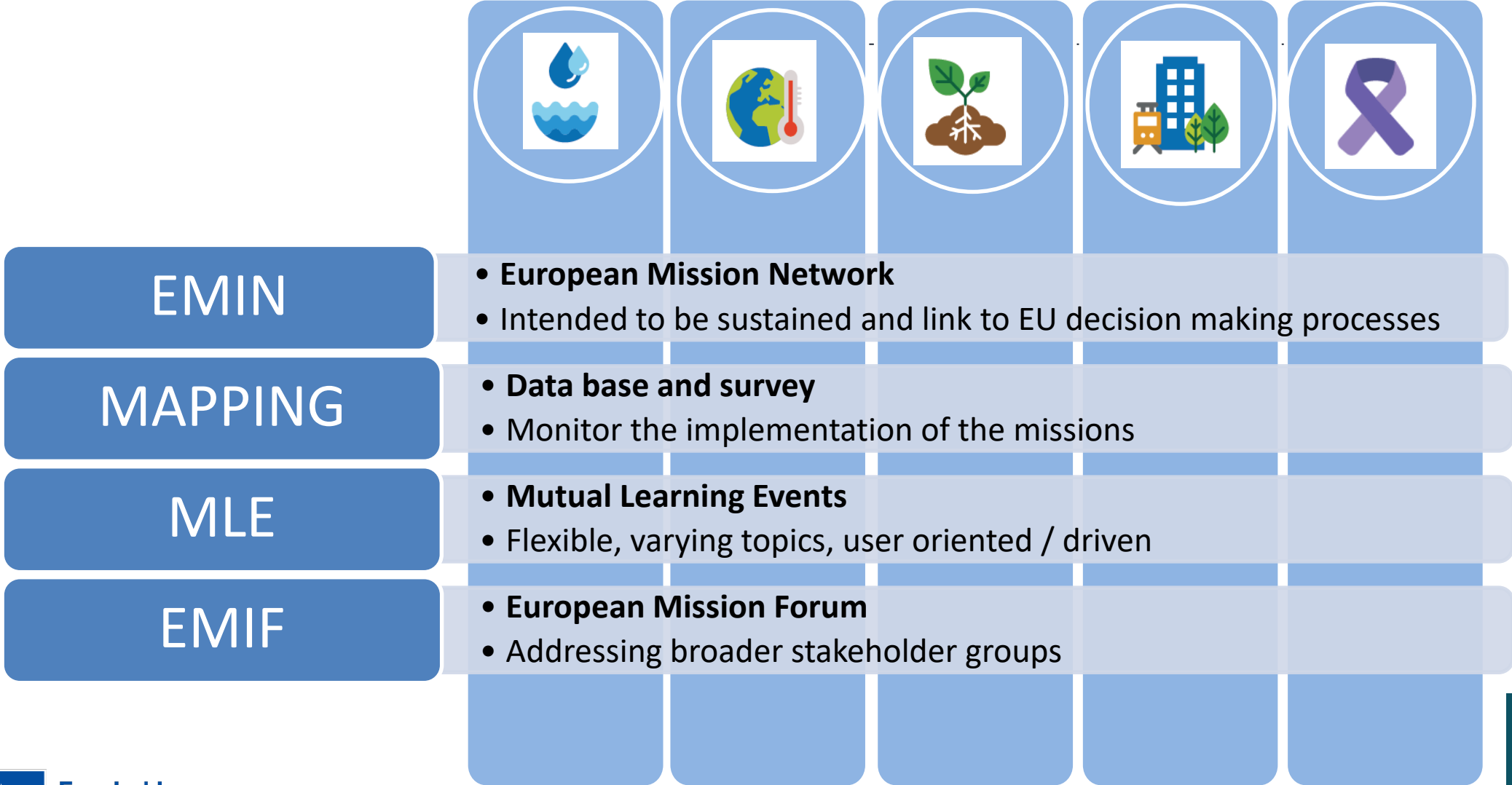
To **raise awareness and to engage and mobilise key stakeholders and citizens** to actively participate in EU Missions processes and activities



To engage and mobilise key stakeholders and citizens

...across the missions and governance levels
...with a view to build sustainable 'infrastructures'

Creating formats for SUSTAINED learning and collaboration ...



Assessment of the advancement of missions

„Mission readiness“ is uneven

- Some countries and regions have set up mission governance structures and programmes already; others only about to start

No single best model

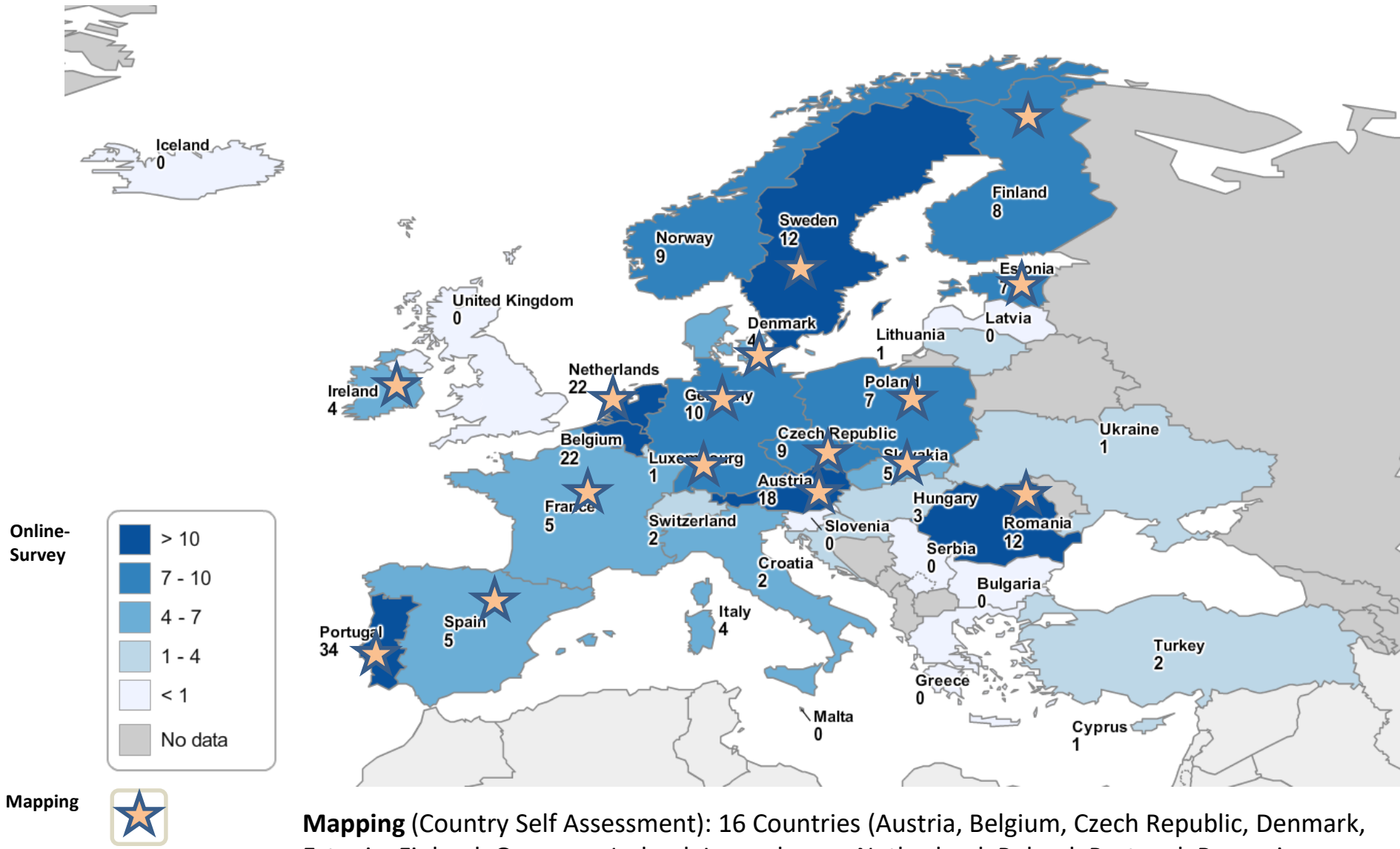
- Trajectories of national political systems matter; missions need to be embedded in and aligned with existing structures, institutions and initiatives, including pre-existing national missions

Need for alignment

- Need for EU missions to be aligned and synchronised with pre-existing strategies, initiatives, and even missions on the national and regional level and synchronization

STI and policy trap

- Mission-oriented policies need to go beyond STI policy (“whole of government”), and beyond policy circles. Involvement of business and citizens still to be strengthened in the individual missions.



Mapping (Country Self Assessment): 16 Countries (Austria, Belgium, Czech Republic, Denmark, Estonia, Finland, Germany, Ireland, Luxembourg, Netherland, Poland, Portugal, Romania, Slovakia, Spain, Sweden)

Survey: Geographical background of respondents (Sample size n=210, 26 countries)

Assessment of the advancement of missions

„Mission readiness“ is uneven

- Some countries and regions have set up mission governance structures and programmes already; others only about to start

No single best model

- Trajectories of national political systems matter; missions need to be embedded in and aligned with existing structures, institutions and initiatives, including pre-existing national missions

Need for alignment

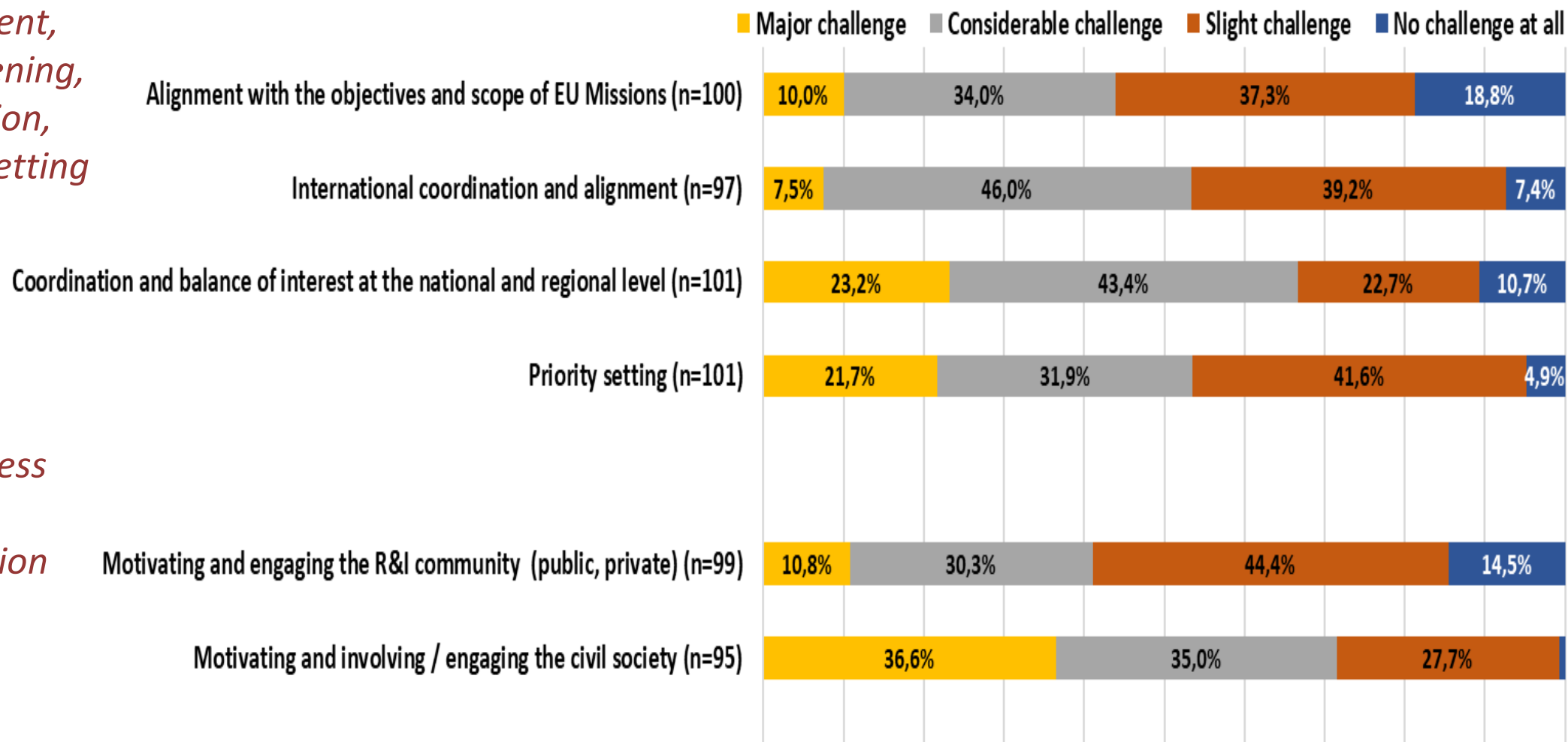
- Need for EU missions to be aligned and synchronised with pre-existing strategies, initiatives, and even missions on the national and regional level and synchronization

STI and policy trap

- Mission-oriented policies need to go beyond STI policy (“whole of government”), and beyond policy circles. Involvement of business and citizens still to be strengthened in the individual missions.

CHALLENGES OF THE IMPLEMENTATION OF EU MISSIONS (1)

*Alignment,
pre-screening,
definition,
priority setting*



Assessment of the advancement of missions (2)

Good and promising practices emerging

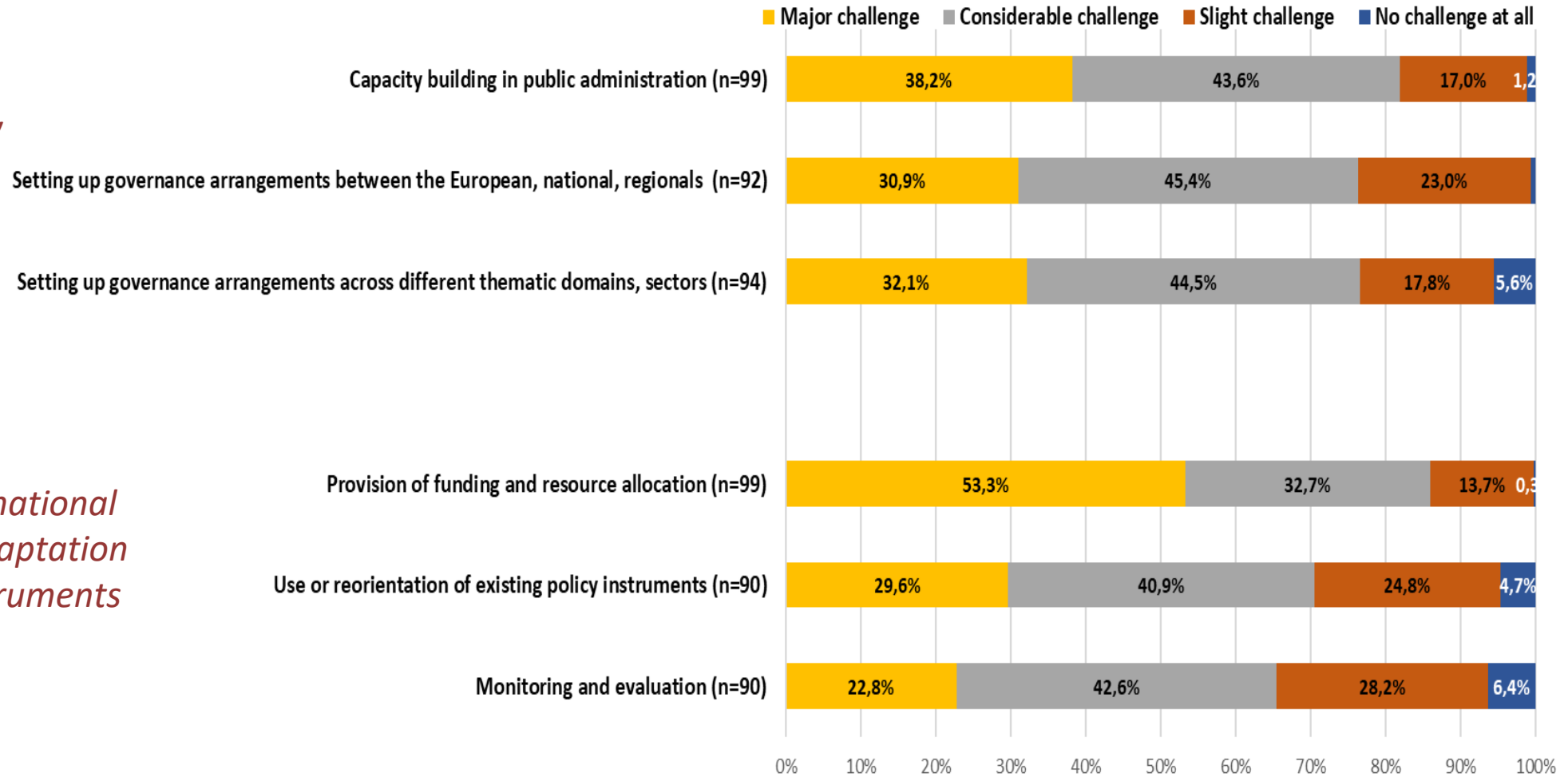
Institutional capacity-building

Missions still receive too limited attention and funding

- Willingness of advanced countries and regions to share their innovative and promising experiences meets strong demand from other countries
- Building institutional capacities for mission governance (at strategic and operational levels) takes time.
- Attention to (longer term) missions overshadowed by pressing concerns over 'polycrises'. Not all missions convey a strong "sense of urgency"

CHALLENGES OF THE IMPLEMENTATION OF EU MISSIONS (2)

Governance Structures and capacity



- **Join and actively support EMiN**
 - Regular meetings, events and information on missions in Europe
- **Participate and promote EMiF European Missions Forum 2024**
 - EMiF 2023 (31 January 2023) attended by ~1000 participants
 - EMiF 2024 planned for March
- **Contribute to Mapping**
 - In focus: MS/AC beyond TRAMI members (country correspondents)
- **Initiate and participate in Mutual Learning Events**
- **Help creating sustainable structures** to support mission implementation (on national and EU level) beyond the duration of the project

- Share your experiences with implementing the EU missions?
- What are the key challenges?
- Where do you see potential for further development of the missions?
- How could TRAMI support you?

EMIN

- European Mission Network
- Currently >135 Members
- **Register at** www.trami5missions.eu
- Give us feedback
- Tell us what you need
- Stay informed – check our Website
- Participate in our activities
- Help us build the EMIN by being an active member!

Recent Events on Governance of Missions, on the conceptual foundations of Missions, ...

Upcoming: 23 June SPC Missions Subgroups (invitation only)

Upcoming: 5 July: Getting Citizens Engaged
open for all

Join us any time: @EMiN Coffee Chat - every 2nd Thursday of the month 9:00-10:00
Except in June, Wednesday -7th



- To learn more about the project and its partners, visit our Website: www.trami5missions.eu
 - To learn more about EMiN Website: <https://www.trami5missions.eu/about-emin>
- Stay informed about current activities, suscribe to the TRAMI Newsletter (registration on the website)
 - Connect via LinkedIn (just look for #TRAMI)

wolfgang.polt@joanneum.at
matthias.weber@ait.ac.at



Funded by
the European Union